

Add: Suite 616 Cimic Tower, NO.1090 Century Ave. Pudong New Area, Shanghai, China 200120

Tel: +86 21 58351816 / 58353230
Email: info@leadermarine.com
Website: <http://www.leadermarine.com>

Leader Marine (China) Co. Ltd. Greece Office
Tel: +30 694 4785985
Email: sales4@leadermarine.com

Leader Marine (Singapore) Pte.Ltd.
Tel: +65 6570 8385
Email: leader@leadermarine.com.sg

Leader Marine (Europe) B.V.
Tel: +31 10 8001048
Email: info@leadermarine.com

Leader Marine (USA) Inc.
Tel: +1 832 5837755
Email: sales@leadermarineusa.com

Authorized Agent



GLOBAL SERVICE

Your Global Maritime Supply Leader
24 / 7 throughout the year around the world

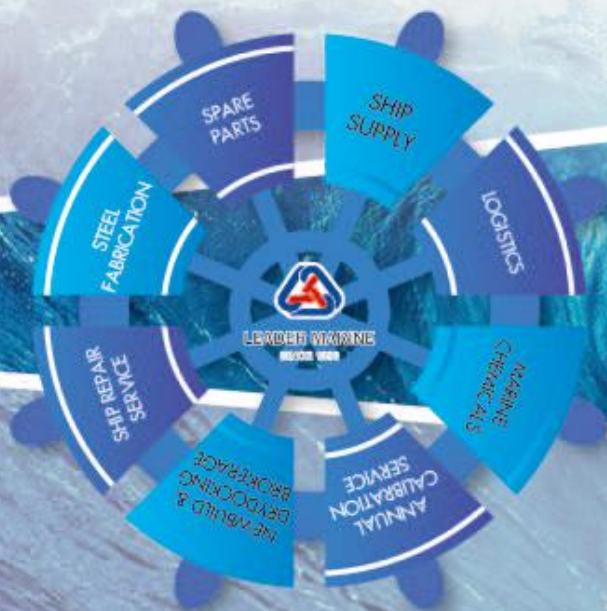


LEADER MARINE
SINCE 1996



LEADER MARINE GROUP

We specialize in supplying our customers across different sectors:



OUR MARKETS

We specialize in supplying our customers across different sectors:



- Rotterdam
- Hamburg
- Singapore
- Osaka
- Busan
- New York
- Houston
- Los Angeles
- New Orleans
- Shanghai
- Qingdao
- Tianjin
- Shenzhen
- Hong Kong
- Taiwan



GLOBAL FOOTPRINT

We are present in all major hubs and more than 200 ports through our network



LEADER MARINE CATERING

We are experts in the supply of provisions and stores to catering companies, offshore industry and ships of every kind.

We have a solid fully owned global network of highly trained staff with great knowledge of the local markets, providing supplies to all types of vessels and offshore locations.

A global network with a local touch





MEGACHEM MARINE CHEMICAL SOLUTIONS

Your marine cleaning expert

Megachem offers basic engine room & tank cleaning chemicals. We also have developed leading rang in tank/hold cleaning products for our clients. We provide advice in tank cleaning challenges based on many years of experience and knowledge.

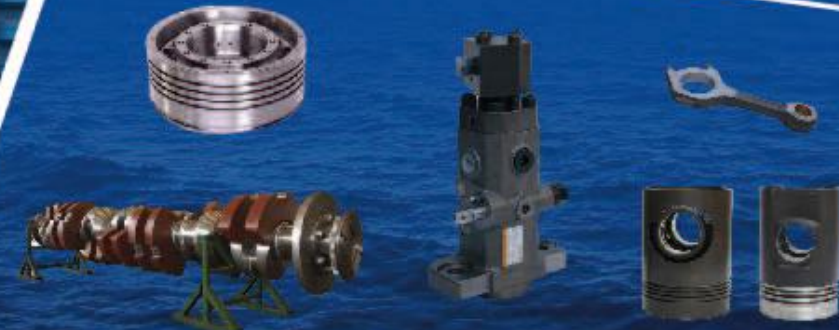


LEADER MARINE SPARE PARTS

Your professional global supplier of spare parts

We are a leading supplier of marine equipment & spare parts from Europe, China, Korea, Japan – we focus on Genuine, OEM and suitable alternatives parts of high quality. Our highly experienced technical staff has an extensive knowledge of suppliers and run a professional logistics service on a global scale.

- CHINA
- KOREA
- SINGAPORE
- JAPAN
- GERMAN
- NETHERLANDS





PROFESSIONAL REPAIR SERVICE

Professional repair works on board a vessel including

- Engine service or maintenance
- Turbocharger/Governor Overhaul or repair
- Boiler Repair
- Engine Parts Recondition
- Electronics
- Deck Machinery & Hydraulic System Service
- Navigation equipment service & repair



GLOBAL LOGISTICS

DELIVERY SERVICE Global expertise with a local touch

You can send spare parts from any corner of the world to our warehouse in Shanghai, Houston, Singapore, Rotterdam. We are in charge of collecting them and following vessel's schedule which will assure you with timely deliveries. By doing so, we can help you to save both money and time.



ANNUAL INSPECTION AND CALIBRATION SERVICE

Business scope-

- Firefighting system
- Life boat, rescue boat and Davit
- Life-raft
- EEBD & BA
- Immersion suit
- Gas detector
- Alcohol detector
- 1.5ppm
- Ultrasonic thickness gauging for steel
- Navigation equipment
- UTI
- Crane and overhead crane
- Elevator
- All kinds of meters





REGION: NORTH EUROPE

Located in the heart of Rotterdam our warehouse of 5000 m2 offers

Packing and transportation; warehousing and stocking of own stocks and products; storing of third party articles and owners parts and landed goods; freight forwarding and customs services ; Dedicated boarding officers operating in Dutch, English, German and Greek languages. Logistics hub for Northern Europe: Norway, Denmark, Belgium, Northern France, Germany and Poland.



Language we speak:



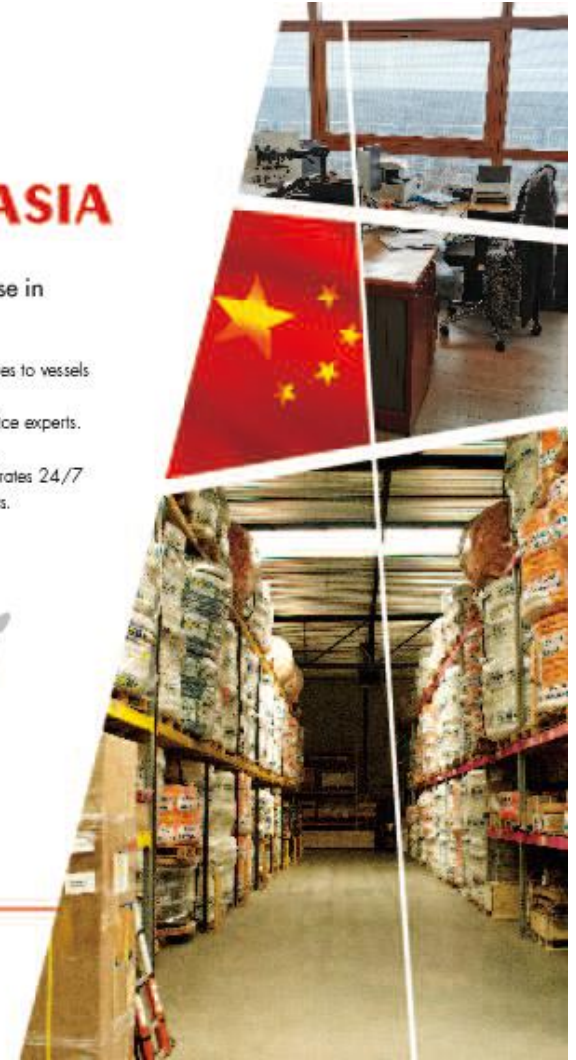
REGION: FAR EAST ASIA

4000 square meter warehouse in China & Korea

Provides deck, engine and provision stores to vessels calling Chinese&Korean.
Marine spare sourcing ship repair & service experts.
Staff on duty 24 hours, 7 days a week.
International purchasing department operates 24/7 hours to keep in touch with world markets.
Dedicated boarding officers.



Language we speak:





REGION: SOUTH EAST ASIA

More than 10000 square feet warehouse

Provides marine and offshore supplies, marine equipment, spare parts delivery and other miscellaneous services to Singapore, Malaysia and rest of South East Asia.

Dedicated boarding reps who supervise the delivery of supplies on board vessels to ensure they meet the client's requirements.



Language we speak:



REGION: AMERICAS

More than 30000 square feet warehouse

With the Regional headquarters located in Houston, and our branches throughout the U.S., we provide around the clock coverage, we focus on guaranteeing our customers receiving the best level of care and service at any port your vessels may call.

Dedicated boarding officers operating in person supervising the delivery of supplies on board vessels to ensure they meet the client's requirements.



Language we speak:

